



# Retail that resonates



## Santa Maria Commons

Located on the southwest corner of S. Broadway & W. McCoy Ln. in Santa Maria, CA  
[www.newmarkmerrill.com](http://www.newmarkmerrill.com)



NewMark Merrill  
COMPANIES

# Prime Retail Space Available

on the southwest of S. Broadway & W. McCoy Ln.

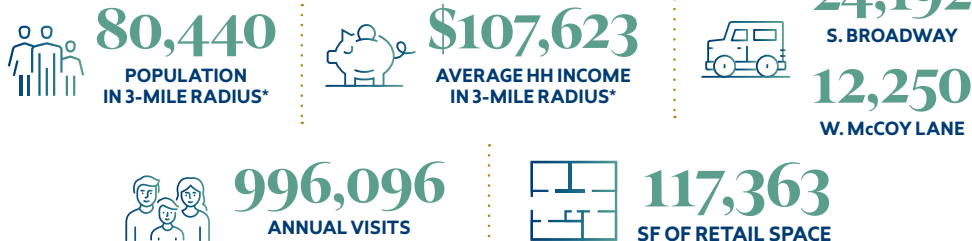
Santa Maria Commons is strategically located at the high-traffic intersection of S. Broadway and W. McCoy Lane—just one mile from U.S. Highway 101—offering exceptional visibility and accessibility in the heart of Santa Maria, CA. Situated in Santa Barbara County along California's Central Coast, the city is one of the fastest-growing communities in the region, driven by a stable economy anchored in agriculture, healthcare, and education.

This thriving retail center is anchored by nationally recognized brands Kohl's and Sephora, generating consistent foot traffic and attracting a broad customer base from both local neighborhoods and the greater Santa Maria Valley. With a market population exceeding 100,000 and strong regional draw, Santa Maria Commons is a lucrative retail destination.



**KOHL'S**  
+ SEPHORA

**WELLS FARGO**



\*Estimates are based on 2025 demographics for population and average income per household. The information contained herein is not guaranteed and should be independently verified.

# Santa Maria Commons



#	TENANT	SF	#	TENANT	SF	#	TENANT	SF
2405	Lease Pending	16,738	2415	LOL Yogurt	1,045	2445	Domino's Pizza	3,850
2407	Natural Café	2,888	2423	VIP Nail Salon	1,045	2501	Kohl's	88,800
			2445	Yanagi Sushi	2,997			

**When you love shopping centers, it shows.**

24025 Park Sorrento, Ste. 300 • Calabasas, CA 91302 • 818.710.6100 • [www.newmarkmerrill.com](http://www.newmarkmerrill.com)

NOTE: This information is conceptual in nature and is subject to adjustments pending verification and Client, Tenant, and Government Agency approvals. No warranties or guaranties of any kind are given or implied by the Architect or Owner.

For Leasing Information  
please contact:

**Darren Bovard**

Senior Vice President - Leasing

Tel: 818.710.6100, x5729

[dbovard@newmarkmerrill.com](mailto:dbovard@newmarkmerrill.com)

DRE LIC# 01362187



NewMark Merrill  
COMPANIES