

# STONY ISLAND PLAZA

95TH ST & STONY ISLAND AVE



**MID-AMERICA**<sup>®</sup>  
Asset Management, Inc.

Owned By:   
**NewMark Merrill**  
COMPANIES



RETAIL OPPORTUNITY



95TH ST & STONY ISLAND AVE



## Address

SEC 95th Street  
& Stony Island Avenue  
Chicago, IL

## Features

- 2.9 Million visits in the last 12 months
- Over 83,000 residents within a 2 mile radius
- Chicago State University and Olive-Harvey College ( $\pm$  16,725 students combined) located approximately 1.5 miles from site
- Monument signage and 742 parking spaces available
- On-site Pace bus service and CTA bus stop on 95th Street with lighted access
- Close proximity to the 50, 57 and 94 freeways
- Traffic counts at the corner of Stony Island Ave & 95th St exceed 76,000 vehicles per day

## Availability

1,190–3,955 SF

## Co-Tenants



H&R BLOCK



## Demographics

	1 Mile	2 Miles	3 Miles
POPULATION	16,435	83,436	200,247
HOUSEHOLDS	6,530	32,567	77,052
AVG HOUSEHOLD INCOME	\$63,070	\$55,397	\$57,372
DAYTIME POPULATION	15,717	71,362	174,708



# STONY ISLAND PLAZA

95TH ST & STONY ISLAND AVE



Stony Island Avenue: 56,100 vpd

95th Street: 20,000 vpd



Suite	Tenant	SF
1615	Circle K	4,000
1617	KFC	2,685
1619	Snipes	5,000
<b>1623</b>	<b>Available</b>	<b>1,190</b>
<b>1625</b>	<b>Available</b>	<b>2,765</b>
1627	Happy Nails	3,500

Suite	Tenant	SF
1631	Ashley Stewart	3,640
1637	Star Beauty Supply	9,800
1655	Jewel-Osco	70,000
1709	dd's Discounts	24,960
1715	Oak Street Health	10,080

Suite	Tenant	SF
1725	Joint Relief Institute	2,000
1729	DTLR	5,000
1733	H&R Block	2,000
1735	Total Wireless by Verizon	1,495

Suite	Tenant	SF
1737	BJ's Market & Bakery	1,170
<b>1741</b>	<b>Available</b>	<b>3,500</b>
1747	Athletico	2,420
1753	Seashell Restaurants	1,815
1751	America's Best	2,765
<b>Total GLA</b>		<b>159,785</b>

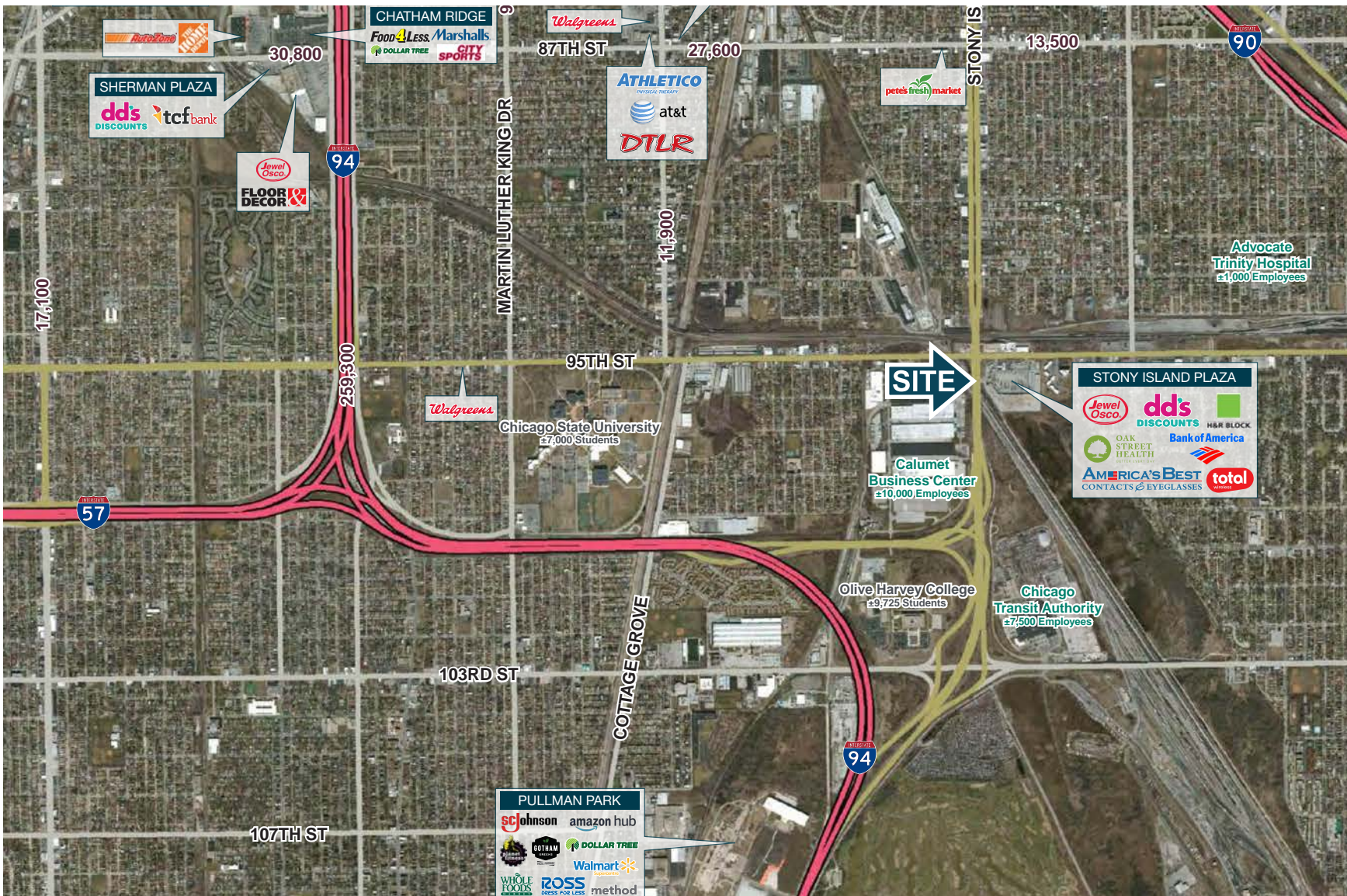
Suite	Tenant	SF
1651	Bank of America (Sperately Owned)	6,450
1625	Burger King (Sperately Owned)	6,500

SITE PLAN



# STONY ISLAND PLAZA

95TH ST & STONY ISLAND AVE





95TH ST & STONY ISLAND AVE

## Liz Krebs

Mid-America Asset  
Management, Inc.  
630.954.7362  
[LKrebs@MidAmericaGrp.com](mailto:LKrebs@MidAmericaGrp.com)

## Campbell Wickland

Mid-America Asset  
Management, Inc.  
630.954.7236  
[CWickland@MidAmericaGrp.com](mailto:CWickland@MidAmericaGrp.com)



One Parkview Plaza, 9th Floor  
Oakbrook Terrace, Illinois 60181  
630.954.7300

[MidAmericaGrp.com](http://MidAmericaGrp.com)

Owned By:



NewMark Merrill  
COMPANIES



CONTACT